

G R U P P O
MOMA
c e r a m i c h e



Factories Skills



↑
Fiorano production
plant



↑
Sassuolo
production plant

G R U P P O
MOMA
c e r a m i c h e

→
Finale Emilia
production plant



The **Fiorano Modenese factory** was established in 1976.

This is where pressed line products with natural edges are manufactured with verticalisation to the smallest format.

Production is focused entirely on porcelain stoneware, in fact we call this plant as the 'hub of pressed porcelain stoneware'.

Inside these sheds there are four presses, which vent their productivity on four glazing lines and two double channel firing lines, for a total productivity that can reach 7.5 million square metres of finished product when fully operational.

The main formats that are produced are:

30x120, 20x120, 15x60, 30x60, 34x34,
21,6x21,6, 21,6x43,5, 22x22, 20,3x90,6,
45x45, 40x60.

Fiorano production plant
135 Employees



GRUPPO
MOMA
ceramiche

The **Sassuolo plant** is to be acquired in 2021.

The facility is one of the oldest in the district and one of the symbols of the history of Italian ceramics.

After a series of investments aimed at industrial 4.0 renewal, we call this plant the 'grinding hub'.

In fact, thanks to the new presses and the integration of the latest generation of dry grinding, we can produce porcelain stoneware in 2 cm thickness and traditional rectified thickness.

Inside these sheds, productivity reaches 4 million square metres of finished product when fully operational.

The formats that are produced are:

60x120 (also in 2 cm), 30x120, 20x120, 90x90(also in 2 cm), 40x80 (also in 2 cm), 60x60 (also in 2 cm), 30x60.

Sassuolo production plant

53 Employees

The production of porcelain stoneware

GRUPPO
MOMA
ceramiche

The Porcelain stoneware represents 92% of the district's product portfolio.

National statistics show that in 2022, the square meters produced increased by 22.4%, bringing the volume to 392.7 million square meters.

The investments we've made in the last four years have made the company very competitive on the production side, bringing production to a volume of 11.5 million square meters.

Nowadays, the production is among the top companies in the district.

The advantages of porcelain stoneware

Compared to alternative materials (for example vinyl parquet or laminate), porcelain stoneware still has unsurpassed characteristics such as:

- **Resistance:** it is a hard material, which tolerates abrasions, scratches and breakages.
- **Waterproof:** thanks to a high internal cohesion, it does not allow the penetration of liquids.
- **Safety:** it is fireproof, which means it can inhibit flames.
- **Health:** it is a material that does not retain germs, dust and dust



- **Eclecticism:** to broaden the choice, tiles are produced in a wide variety of sizes, from a few centimeters to a meter and more.
- **Versatility:** porcelain stoneware allows you to have at home all the charm of expensive materials such as marble or wood at a cost significantly lower than the "original".
- **Cost-effectiveness:** in competition with other types of materials, it wins for its economy.

The **Finale Emilia plant** encapsulates all the power of the production of coating materials.

Coating is the identifying trait of Moma and it is the DNA that today allows us to be almost a monopoly producer in Italy.

The factory is the first in Italy by volume and among the first in Europe.

Four production lines, eight kilns (4 drying and 4 firing), five presses and four digital glazing presses push production up to 12 million square metres per year.

The process defines a two-pronged offer: traditional double-firing made from the area's 0-km land and the fine white body that will have the added value of dry grinding by 2022.

The formats produced are: 20x20, 20x45, 20x40, 20x50, 20x60, 25x33, 25x40, 25x60, 25x75 (rectified white body and traditional white body), 30x60 (only rectified white body).

Finale Emilia production plant
152 Employees



The production of the ceramic coating

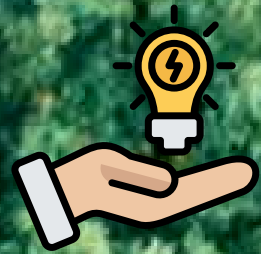
GRUPPO
MOMA
ceramiche

The Italian district has produced in quantitative terms, according to National Statistics (ISN 2022) of Confindustria ceramica, 17.9 million square meters of double firing complete cycle.

Compared to 2020 (Covid), 2022 shows a further production increase of 3.4 per cent.

Our production produces 12 million square meters of double firing product and, based on the statistics above, Moma could cover 75% of demand.





High process and production energy savings due to heat recovery



Efficiency in the grinding process and savings in production-consumption

G R U P P O
MOMIA
c e r a m i c h e

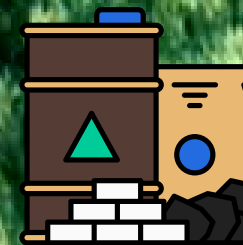
The sustainable ceramic coating supply chain



No water is used in the dough production process, thus saving 100 per cent H₂O



30% less CO₂ is saved annually in terms of transport due to the weight of the finished product compared to porcelain stoneware



Zero KM local raw materials 100% CO₂ impact in terms of transport

G R U P P O
MOMMA
c e r a m i c h e

Via Panaria Bassa 17/a
41034 Finale Emilia (MO)
www.gruppomoma.com



Via Ghiarola nuova, 77
41042 Fiorano Modenese (MO)
Italia
www.savoiaitalia.it



Via Emilia Ovest ,54/c
42048 Rubiera (RE)
Italia
www.paulceramiche.it



Via Enrico Mattei , 4
42048 Rubiera (RE)
Italia
www.herberiaceramiche.it



Via Panaria Bassa, 17
41034 finale Emilia (MO)
Italia
www.ideaceramiche.biz



Via Romana, 7
42020 B. di Albinea (RE)
Italia
www.arpaceramiche.it